

1.06 AC LAND - I-30

For sale:
I-30 East of Zion Rd
Garland, Texas 75043

Metrics

I-30 East of Zion Rd
Garland, Texas 75043

Location

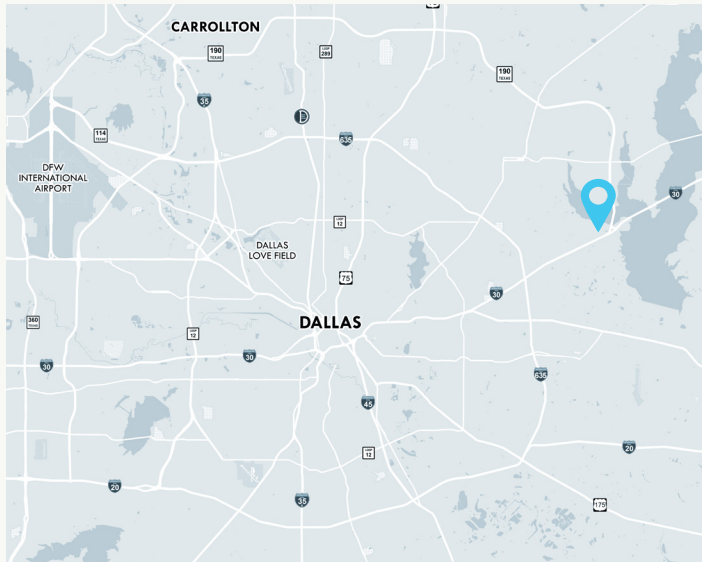
I-30 East of Zion Rd

Size

Land
1.06 AC

Traffic Counts

I-30
151,717 VPD



Property Highlights

1. Great visibility to I-30
2. Excellent freeway access
3. Regional location allows for quick drive times to adjacent markets
4. Zoning: CO - Community Office

2025 Demographic Summary

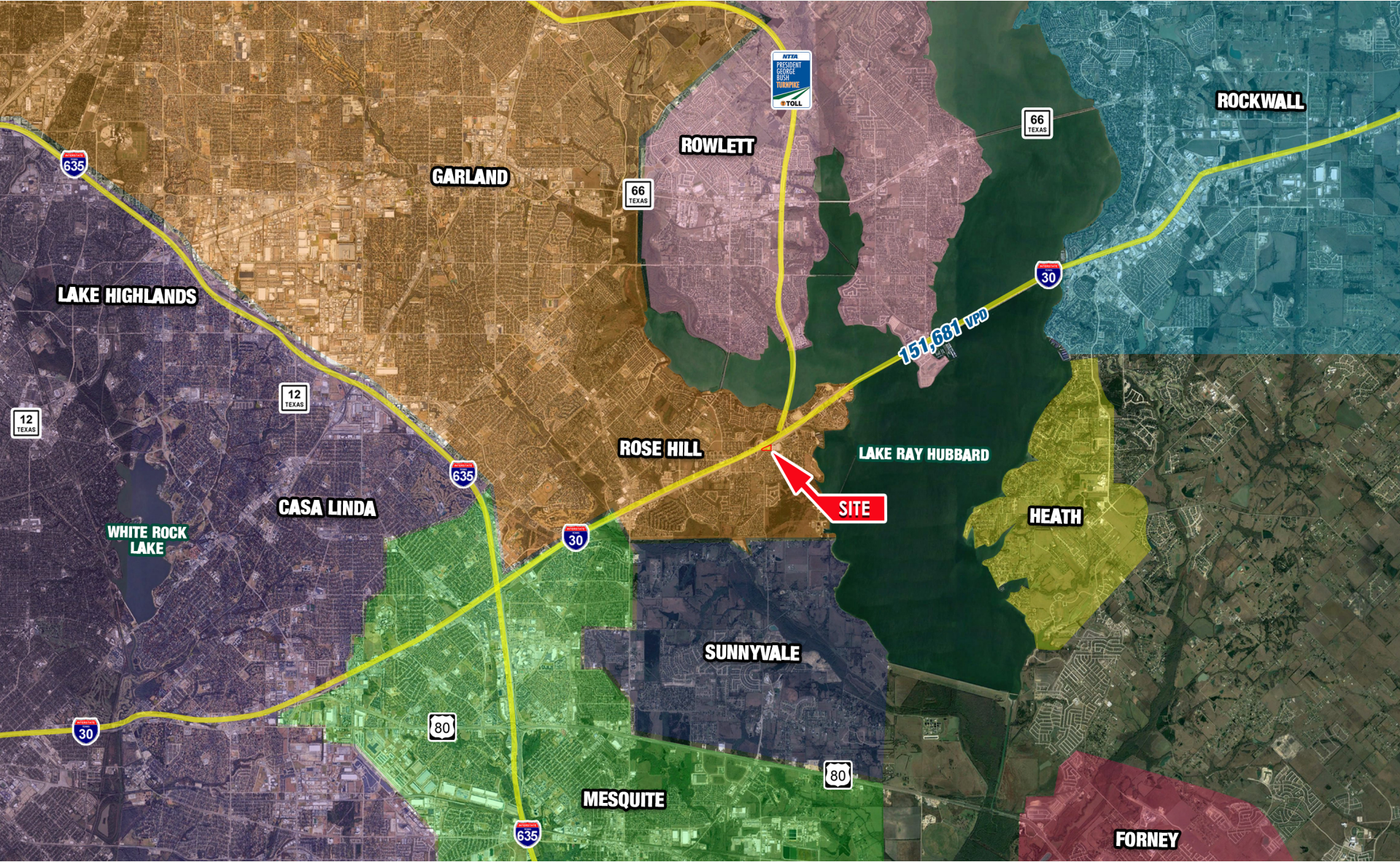
	1 MILE	3 MILES	5 MILES
EST. POPULATION	10,711	56,286	168,097
EST. DAYTIME POPULATION	766	8,291	38,067
EST. AVG. HH INCOME	\$83,954	\$113,649	\$124,510

Area Attractions



Aerial

I-30 East of Zion Rd
Garland, Texas 75043



I-30 East of Zion Rd
Garland, Texas
75043

Colin Beams
Senior Vice President
cbeams@venturedfw.com

(214) 378-1212

www.VentureDFW.com

8235 Douglas Ave
Suite 720
Dallas, Texas 75225

VENTURE

*The information contained herein was obtained from sources deemed reliable; however, Venture Commercial Real Estate, LLC, makes no guarantees, warranties or representations as to the completeness or accuracy thereof. The presentation of this property is subject to errors; omissions; change of price, prior to sale or lease; or withdrawal without notice.

